



For more information on  
KCC Beauty, please contact  
us as below.

KCC Beauty Headquarter  
KCC Silicone Corporation,  
344, Sapyeong-daero, Seocho-gu, Seoul, Korea  
Tel: +82 2 3480 5811 Fax: +82 2 3480 5887  
e-mail: silicone@kccworld.co.kr

[www.kccsilicone.com](http://www.kccsilicone.com)

[www.kccsilicone.com](http://www.kccsilicone.com)

**KCC SILICONE**

## PERSONAL CARE PRODUCT BROCHURE

KCC Beauty,  
Formulating the Future



**KCC SILICONE**



## About us

KCC SILICONE Corporation built the first silicon monomer production facilities in Korea and successfully localized raw materials for silicones, which had been imported from other countries. Through the synthesis and application of silicone monomers and polymers, we produce and supply silicone products including sealants, silicone rubber, silanes, silicone oils, silicone emulsions and silicone dispersions for construction and business. In addition, we are committed to helping our customers gain competitive advantages by supplying products that meet their needs through continuous R&D and technology innovation.

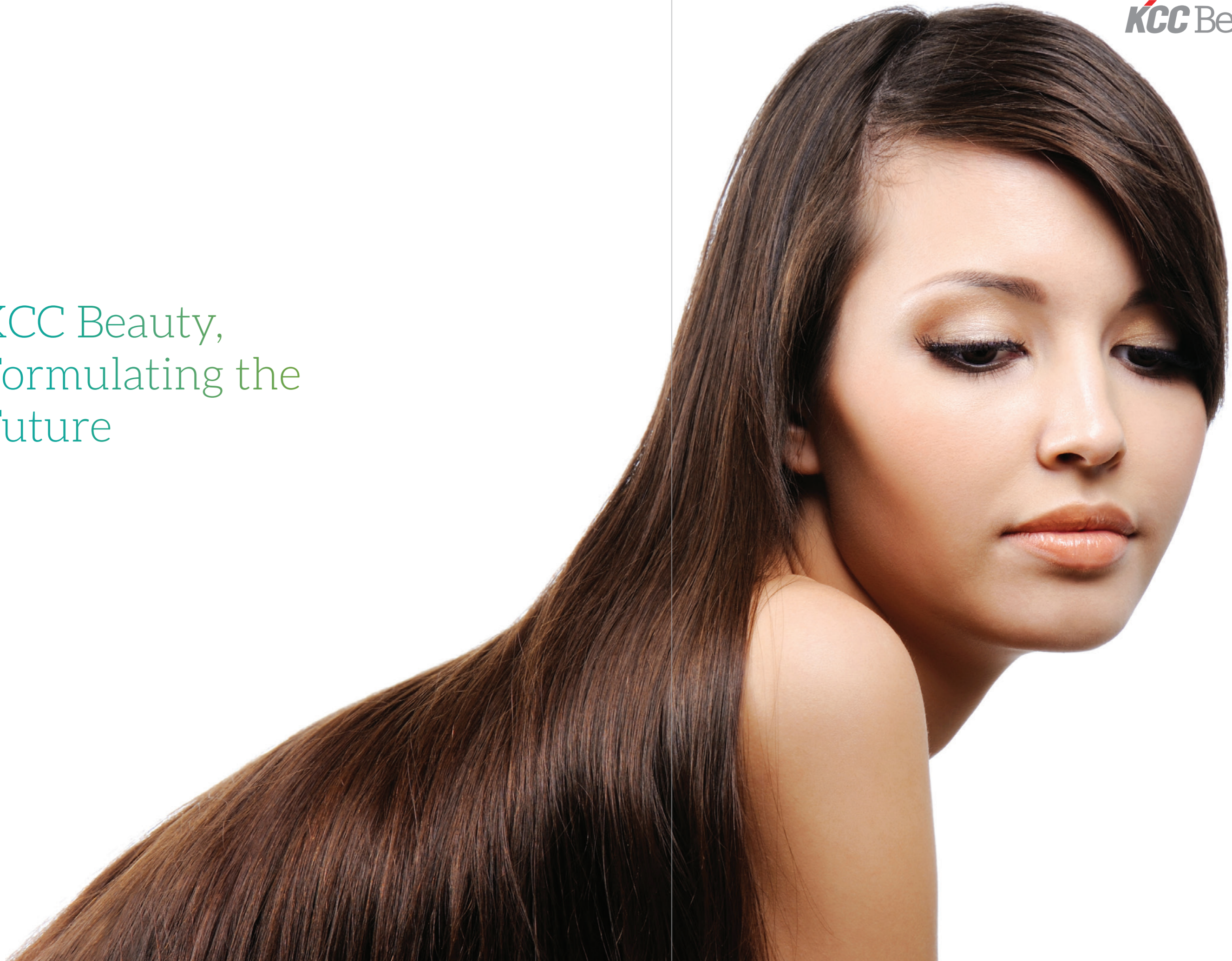
In order to produce eco-friendly and sustainable silicone products, KCC SILICONE corporation optimizes its pollution prevention facilities for each type of pollutant. In response to growing social demands for safe and eco-friendly manufacturing processes, we established a new safety and environmental inspection system and renovated our existing facilities.

With the market trend of eco-friendly and healthy products, there is a growing demand for sustainable products in the construction industry. As we have worked on meeting demand ahead of time, we were named by the Minister of Environment in 2010 as a leading resource recycling company that had improved its environmental competitiveness by reducing waste at business sites.

## Contents

Product List	6
<b>SeraSense®</b>	
Volatile Silicone Fluids	8
Dimethicone Fluids	10
Gum Blends	10
Phenyl Modified Silicones	12
Vinyl Dimethicone Fluids	12
Amino-Functional Fluids	12
Film formers & Fixatives & Dispersants	14
Functional Fluids	14
<b>SeraSol®</b>	
Silicone Copolyols	16
<b>SeraSoft®</b>	
Silicone Waxes	18
<b>SeraShine®</b>	
Dimethicone Emulsions	20
Amino Functional Emulsions	22
Multi-Functional Emulsions	24
<b>SeraSilk®</b>	
Elastomer Blends	26
<b>SeraSnow®</b>	
Silicone Powders & Treatments	28
<b>SeraSkin®</b>	
Skin Adhesion Polymers	30

KCC Beauty,  
Formulating the  
Future



SeraSense®  
Dimethicone Fluids and Fluid Blends

**Volatile Fluids** Page 8

Product Name	INCI Name
SeraSense SF 0.65	Disiloxane
SeraSense SF 1	Trisiloxane
SeraSense SF 1.5	Dimethicone
SeraSense SF 2	Dimethicone
SeraSense SF 1.8	Dimethicone
SeraSense SF CM5	Cyclopentasiloxane
SeraSense SF CM56	Cyclopentasiloxane (and) Cyclohexasiloxane
SeraSense SF CPM-A	Caprylyl Methicone
SeraSense SF MTM	Methyltrimethicone

**Dimethicone Fluids** Page 10

Product Name	INCI Name
SeraSense SF 5	Dimethicone
SeraSense SF 6	Dimethicone
SeraSense SF 10	Dimethicone
SeraSense SF 20	Dimethicone
SeraSense SF 50	Dimethicone
SeraSense SF 100	Dimethicone
SeraSense SF 350	Dimethicone
SeraSense SF 1K	Dimethicone
SeraSense SF 10K	Dimethicone
SeraSense SF 12.5K	Dimethicone
SeraSense SF 60K	Dimethicone

**Gum Blends** Page 10

Product Name	INCI Name
SeraSense GB 10	Cyclopentasiloxane (and) Dimethiconol
SeraSense GB 12	Dimethicone (and) Dimethiconol
SeraSense GB 16	Dimethicone (and) Dimethiconol
SeraSense GB 26	Cyclopentasiloxane (and) Dimethiconol
SeraSense GB 87	Isododecane (and) Dimethiconol
SeraSense GB 88	C11-13 Isoparaffin (and) Isohexadecane (and) Dimethiconol
SeraSense GBA 85	C13-15 Alkane (and) Dimethiconol
SeraSense GBA 86	Undecane (and) Tridecane (and) Dimethiconol
SeraSense GB 11	Cyclopentasiloxane (and) Dimethicone
SeraSense GB 14	Cyclopentasiloxane (and) Dimethicone
SeraSense GB 24	Cyclopentasiloxane (and) Dimethicone
SeraSense GB 36	Dimethicone
SeraSense GB 38	Dimethicone

**Phenyl Modified Silicones** Page 12

Product Name	INCI Name
SeraSense SF DDM	Diphenyl Dimethicone
SeraSense SF PTM	Phenyl Trimethicone

**Vinyl Dimethicone Fluids** Page 12

Product Name	INCI Name
SeraSense SF VD 100	Vinyl Dimethicone
SeraSense SF VD 200	Vinyl Dimethicone

**Amino-Functional Fluids** Page 12

Product Name	INCI Name
SeraSense SA 30	Amodimethicone
SeraSense SA 34	Amodimethicone

**Film Formers & Fixatives & Dispersants** Page 14

Product Name	INCI Name
SeraSense AC 15	Acrylates / Dimethicone Copolymer (and) Cyclopentasiloxane
SeraSense AC 16	Acrylates / Dimethicone copolymer (and) Dimethicone
SeraSense AC 17	Acrylates / Dimethicone copolymer (and) Phenyltrimethicone
SeraSense AC 18	Acrylates / Dimethicone copolymer (and) Dimethicone
SeraSense AC 19	Acrylates / Dimethicone copolymer (and) Isododecane
SeraSense ACA 10	Acrylates / Dimethicone copolymer (and) Undecane (and) Tridecane
SeraSense AC 29	Acrylates / Dimethicone copolymer (and) Isododecane
SeraSense RB 21	Dimethicone (and) Trimethylsiloxysilicate
SeraSense RB 22	Cyclopentasiloxane (and) Trimethylsiloxysilicate
SeraSense RB 23	Dimethicone (and) Trimethylsiloxysilicate
SeraSense RB 24	Dimethicone (and) Trimethylsiloxysilicate
SeraSense RBA 25	Undecane (and) Tridecane (and) Trimethylsiloxysilicate
SeraSense RBA 26	C13-15 Alkane (and) Trimethylsiloxysilicate
SeraSense AW 61	Acrylates/ Stearyl acrylate / Dimethicone Methacrylate Copolymer
SeraSense AD 52	Dimethicone (and) Acrylates / Dimethicone Copolymer
SeraSense AD 54	Methyl Trimethicone (and) Acrylates / Dimethicone Copolymer

**Functional Fluids** Page 14

Product Name	INCI Name
SeraSense CF 50	Bis hydroxyethoxypropyl Dimethicone
SeraSense CF 52	Bis hydroxyethoxypropyl Dimethicone
SeraSense CF 53	Bis hydroxyethoxypropyl Dimethicone
SeraSense SF PCA	PCA Dimethicone

SeraSol®  
Water soluble polymers and emulsifiers

**Silicone Copolyols** Page 16

Product Name	INCI Name
SeraSol SC 81	PEG-12 Dimethicone
SeraSol SC 83T	Cetyl PEG / PPG-10 / 1 Dimethicone
SeraSol SC 95	Lauryl PEG-8 Dimethicone
SeraSol SC 85	PEG-11 Methyl Ether Dimethicone
SeraSol SC 86T	PEG-10 Dimethicone
SeraSol SC 93	Bis-PEG-12 Dimethicone
SeraSol SC 105	Dimethicone (and) PEG / PPG-18 / 18 Dimethicone
SeraSol PF 105	Lauryl Polyglyceryl-3 Polydimethylsiloxethyl Dimethicone
SeraSol PF 106	Polyglyceryl-3 Polydimethylsiloxethyl Dimethicone
SeraSol PF 107	Polyglyceryl-3 Polydimethylsiloxethyl Dimethicone
SeraSol EL 92A	Dimethicone (and) Dimethicone / PEG-10 / 15 Crosspolymer
SeraSol EL 98	Isohexadecane (and) PEG-15 / Lauryl Dimethicone Crosspolymer
SeraSol EL 99	Dimethicone (and) PEG-15 / Lauryl Dimethicone Crosspolymer

SeraSoft®  
Soft solid and liquid Silicone waxes

**Silicone Waxes** Page 18

Product Name	INCI Name
SeraSoft SW 70-A	Stearyl Dimethicone (and) Octadecene
SeraSoft SW 71-A	Cetyl Dimethicone
SeraSoft SW 75	Bis-PEG-18 Methyl Ether Dimethyl Silane

SeraShine® Silicone Emulsions

**Dimethicone Emulsions** Page 20

Product Name	INCI Name
SeraShine EM 102	Dimethicone (and) Laureth-23 (and) Laureth-3
SeraShine EM 103R	Dimethicone (and) Laureth-23 (and) Laureth-3
SeraShine EM 104R	Dimethicone (and) Laureth-23 (and) Laureth-3
SeraShine EM 106	Dimethicone (and) Laureth-23 (and) Laureth-3
SeraShine EM 108R	Dimethicone (and) Laureth-23 (and) Laureth-3
SeraShine EM 125	Dimethicone (and) Laureth-23 (and) Laureth-3
SeraShine EM 127	Dimethicone (and) Laureth-23 (and) Laureth-3
SeraShine EM 129	Dimethicone (and) Laureth-23 (and) Laureth-4
SeraShine EM 201-A	Dimethiconol (and) TEA-Dodecylbenzenesulfonate
SeraShine EM 203-A	Dimethiconol (and) TEA-Dodecylbenzenesulfonate
SeraShine EM 205-A	Dimethiconol (and) TEA-Dodecylbenzenesulfonate
SeraShine EM 208-A	Dimethiconol (and) TEA-Dodecylbenzenesulfonate
SeraShine EM 234C	Dimethiconol (and) TEA-Dodecylbenzenesulfonate
SeraShine EM 237	Dimethiconol (and) TEA-Dodecylbenzenesulfonate

**Amino Functional Emulsions** Page 22

Product Name	INCI Name
SeraShine EM 301-A	Amodimethicone (and) Trideceth-12 (and) Cetrimonium Chloride
SeraShine EM 305CR	Amodimethicone (and) C12-14 sec-Pareth-7
SeraShine EM 505	Amodimethicone (and) Dimethicone (and) Laureth-23 (and) Laureth-6
SeraShine EM 512	Dimethicone (and) Amodimethicone (and) Laureth-23 (and) Polyquaternium-10 (and) Laureth-4

**Multi-Functional Emulsions** Page 24

Product Name	INCI Name
SeraShine EM 503	Dimethicone (and) Cocamidopropyl Betaine (and) Trideceth-7
SeraShine EM 504R	Dimethicone (and) Cocamidopropyl Betaine (and) Laureth-3 (and) Guar Hydroxypropyltrimonium Chloride
SeraShine EM 509	Dimethicone (and) Trimethylsiloxysilicate (and) Poloxamer188 (and) Poloxamer 388 (and) 1,2-hexanediol (and) Carbomer
SeraShine EM 510	Dimethiconol (and) Decyl glucoside (and) 1,2-Hexanediol (and) Carbomer
SeraSilk EM 602	Dimethicone / Vinyl Dimethicone Crosspolymer (and) C12-14 sec-Pareth-7
SeraSilk EM 608	Dimethicone (and) Dimethicone / Vinyl Dimethicone Crosspolymer (and) Laureth-4 (and) Laureth-23 (and) 1,2-hexanediol
SeraSilk EM 605	Dimethicone (and) Water (and) Glycerin (and) Butylene glycol (and) Glycereth-20 (and) Pentyleneglycol (and) Dimethicone / Vinyl Dimethicone Crosspolymer (and) Phenoxyethanol (and) Carbomer (and) Amodimethicone (and) Sodium Hydroxide (and) Disodium EDTA
SeraSilk EM 610	Dimethicone (and) Water (and) Glycerin (and) Butylene glycol (and) Glycereth-20 (and) Pentyleneglycol (and) Dimethicone / Vinyl Dimethicone Crosspolymer (and) 1,2-Hexanediol (and) Carbomer (and) Amodimethicone (and) Sodium Hydroxide (and) Disodium EDTA

SeraSilk®  
Silicone Elastomer Blends

**Silicone Elastomer Blends** Page 26

Product Name	INCI Name
SeraSilk EL 58	Dimethicone (and) Dimethicone / Vinyl Dimethicone Crosspolymer
SeraSilk EL 59	Cyclopentasiloxane (and) Dimethicone / Vinyl Dimethicone Crosspolymer
SeraSilk EL 60	Cyclopentasiloxane (and) Dimethicone / Vinyl Dimethicone Crosspolymer
SeraSilk EL 61	Dimethicone (and) Dimethicone / Vinyl Dimethicone Crosspolymer
SeraSilk EL 63	Cyclopentasiloxane (and) Dimethicone / Vinyl Dimethicone Crosspolymer
SeraSilk EL 64	Dimethicone (and) Dimethicone / Vinyl Dimethicone Crosspolymer
SeraSilk EL 65	Dimethicone (and) Dimethicone / Vinyl Dimethicone Crosspolymer
SeraSilk EL 66	Dimethicone (and) Dimethicone / Vinyl Dimethicone Crosspolymer
SeraSilk EL 74	Dimethicone (and) Cyclopentasiloxane (and) Dimethicone / Vinyl Dimethicone Crosspolymer
SeraSilk EL 75	Dimethicone (and) Dimethicone / Vinyl Dimethicone Crosspolymer
SeraSilk EL 81	Isododecane (and) Dimethiconol (and) Dimethicone / Vinyl Dimethicone Crosspolymer
SeraSilk EL 86	Methyl Trimethicone (and) Dimethicone / Vinyl Dimethicone Crosspolymer
SeraSilk EL 10	Dimethicone (and) Dimethicone Crosspolymer
SeraSilk EL 11	Dimethicone (and) Dimethicone Crosspolymer
SeraSilk EL 12	Cyclopentasiloxane (and) Dimethicone Crosspolymer
SeraSilk EL 13	Cyclopentasiloxane (and) Dimethicone Crosspolymer
SeraSilk ELA 20	Undecane (and) Tridecane (and) Dimethicone / Vinyl Dimethicone Crosspolymer
SeraSilk ELA 21	C13-15 Alkane (and) Dimethicone / Vinyl Dimethicone Crosspolymer
SeraSilk AM 76	Cyclopentasiloxane (and) Cetearyl Dimethicone / Vinyl Dimethicone Crosspolymer
SeraSilk AM 80	Dimethicone (and) Cetearyl Dimethicone / Vinyl Dimethicone Crosspolymer
SeraSilk PD 72	Dimethicone (and) Dimethicone / Vinyl Dimethicone Crosspolymer

SeraSnow®  
Elastomer powders and pigment treatments

**Elastomer Powders and Treatments** Page 28

Product Name	INCI Name
SeraSnow SF 10	Methicone
SeraSnow SF 11	Hydrogen Dimethicone
SeraSnow SP 13	Dimethicone / Vinyl Dimethicone Crosspolymer
SeraSnow SP 14	Vinyl Dimethicone / Methicone Silsesquioxane Crosspolymer

SeraSkin®  
Clear gel film-forming silicones

**Skin Adhesion Polymers** Page 30

Product Name	INCI Name
SeraSkin RS 10A	Bis-Vinyl Dimethicone
SeraSkin RS 10B	Bis-Vinyl Dimethicone (and) Bis-Hydrogen Dimethicone (and) Hydrogen Dimethicone

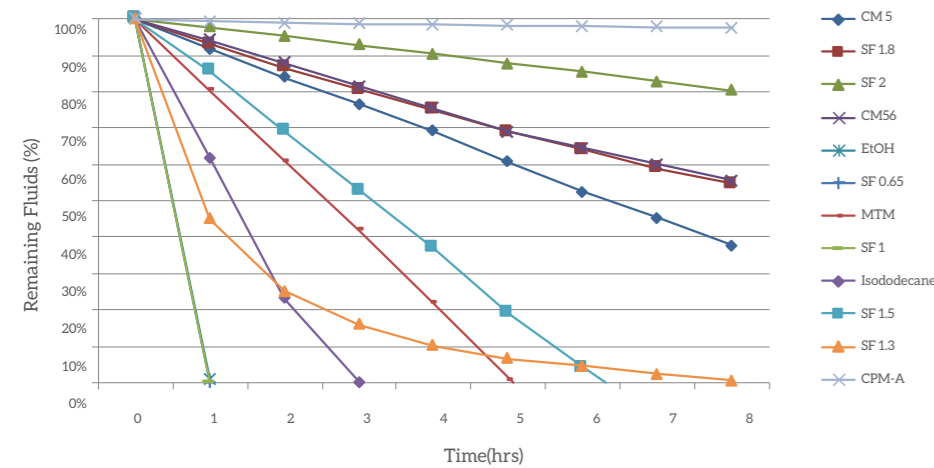
# SeraSense®

A comprehensive range of tantalising sensory focused silicone emollients and conditioners for skin and hair care products.



## Volatile Silicone Fluids

Product Name	INCI Name	Benefits	Characteristics	Appearance	Viscosity (cS at 25°C)	Flash Point (°C)	Surface Tension (mN/m)	Specific Gravity (at 25°C)
SeraSense SF 0.65	Disiloxane	<ul style="list-style-type: none"> <li>Excellent spread quality</li> <li>Very fast vaporisation</li> <li>Non-VOC cosmetic solvent</li> </ul>	The shortest chained dimethicone polymer available for fast evaporation with a non-cooling effect. A good cosmetic solvent	Clear, Colourless Fluid	0.65	-3.3	15.9	0.76
SeraSense SF 1	Trisiloxane	<ul style="list-style-type: none"> <li>Non-VOC cosmetic solvent</li> </ul>	Recommended usage level 1.0-90.0		1	30	16.9	0.818
SeraSense SF 1.5	Dimethicone	<ul style="list-style-type: none"> <li>Soft and silky skin feel</li> <li>Excellent spread quality</li> <li>Non-VOC cosmetic solvent</li> <li>Non-flammable</li> <li>Non skin cooling vaporisation</li> </ul>	Short straight chained dimethicones that have close evaporation profiles to that of D5 with all the versatility and benefits that D5 offer but from a different silicone technology.		1.5	63	17.7	0.852
SeraSense SF 2		Recommended usage level 1.0-90.0	2		80	18.3	0.873	
SeraSense SF 1.8		<ul style="list-style-type: none"> <li>Excellent spreading</li> <li>No oily residue</li> <li>Dry non-greasy feel</li> <li>Improves wet combing</li> <li>Compatible with many organic materials, solvents</li> <li>Low surface tension and viscosity</li> </ul>	<p>Volatile methylsiloxane fluid and has a linear structure with transient emollients or carriers with excellent spread ability and lubrication properties. When volatile silicone fluids evaporate, they do not leave a residue or cool the skin. By using blends of dimethicones this difference in volatility can be used to vary the residence time of the silicone on the skin.</p> <p>Recommended usage level 1.0-90.0</p>		1.8	73	18.1	0.865
SeraSense SF CM5	Cyclopentasiloxane	<ul style="list-style-type: none"> <li>Soft and silky skin feel</li> <li>Excellent spread quality</li> <li>Non-VOC cosmetic solvent</li> <li>Non-flammable</li> <li>Non skin cooling vaporisation</li> </ul>	Cyclic volatile silicone fluids for use in a wide variety of skin, hair and colour personal care applications. Excellent skin feel with a transient emolliency and are deemed to be the most important cosmetic solvents in use today.		4	77	18	0.956
SeraSense SF CM56	Cyclopentasiloxane (and) Cyclohexasiloxane	<ul style="list-style-type: none"> <li>Non-flammable</li> <li>Non skin cooling vaporisation</li> </ul>	Recommended usage level 0.5-90.0		5		20.8	0.957
SeraSense SF CPM-A	Caprylyl Methicone	<ul style="list-style-type: none"> <li>Replace D5 (Less dry than more volatile materials)</li> <li>Excellent compatibility with a wide range of ingredients</li> <li>Improved pigment dispersibility</li> <li>Easy to formulate</li> <li>Superior cleansing effect</li> <li>Can be heated up to 90 °C</li> <li>Possible to make transparent formulations</li> </ul>	An alkyl modified siloxane for use in various skin, colour and lip care formulations to improve smoothness, detakification and emolliency. This polymer is also very compatible with organic ingredients meaning that formulations containing natural materials can be created that still feel light and silky.		3	110	20.4	0.84
SeraSense SF MTM	Methyltrimethicone	<ul style="list-style-type: none"> <li>Replace D5 (better volatile &amp; has lower freezing point)</li> <li>Unique sensory feel</li> <li>Excellent compatibility</li> <li>No irritation</li> <li>Odorless, ultra high purity</li> </ul>	This branched type volatile silicone fluid has faster volatility and lower freezing point than D5. This unique sensory feel product provides improved skin wetting and a quick flash-off that leaves a dry, silky feel on skin with no buildup. And it has excellent emolliency and aesthetic carriers with superior spreading, lubrication and transient conditioning.		1.5	64	-	0.85



## Dimethicone Fluids

Product Name	INCI Name	Benefits	Characteristics	Appearance	Viscosity (cS at 25°C)	Flash Point (°C)
SeraSense SF 5	Dimethicone	<ul style="list-style-type: none"> <li>• Excellent spread</li> <li>• Non-tacky emollient</li> <li>• Low surface tension</li> <li>• Skin lubricity</li> </ul>	Low viscosity dimethicones spread extremely well to create a non-sticky moisture barrier for use in elegant skin protective creams and lotions. Can eliminate the whitening or 'soaping' effect seen in W/O emulsions. Soluble in alcohols.	Clear, Colourless Fluid	5	>90
SeraSense SF 6					6	>150
SeraSense SF 10					10	>160
SeraSense SF 20					20	>200
SeraSense SF 50					50	>300
SeraSense SF 100		100				
SeraSense SF 350		350	<ul style="list-style-type: none"> <li>• Good spread</li> <li>• Non-tacky emollient</li> <li>• Low surface tension</li> <li>• Skin lubricity</li> </ul>		Low-medium viscoisty dimethicones offer greater substantivity than those of a lower viscosity and spread almost as well. Good emollient properties and can eliminate the whitening or 'soaping' effect seen in W/O emulsions.	
SeraSense SF 1K		<ul style="list-style-type: none"> <li>• Clear- Essentially nontoxic</li> <li>• Non bioaccumulating</li> <li>• Non bioactive</li> <li>• Non greasy</li> <li>• Non occlusive</li> <li>• Non rancidifying</li> <li>• Non stinging on skin</li> </ul>	Medium viscosity polydimethylsiloxane polymers manufactured to yield essentially linear polymers with average kinematic viscosities ranging from 1,000 to 10,000cSt.			
SeraSense SF 10K					10,000	>315
SeraSense SF 12.5K					12,500	
SeraSense SF 60K	60,000			<ul style="list-style-type: none"> <li>• Skin protection</li> <li>• Imparts soft velvety skin feel</li> <li>• Spreads easily on both skin and hair</li> <li>• De-soaping (prevents foaming during rubout)</li> </ul>	High-viscosity polydimethylsiloxane polymer for use in personal care applications. The highmolecular-weight dimethicone provides easy combing and detangling for wet or dry hair, and adds softness, smoothness and gloss.	

## Gum Blends

Product Name	INCI Name	Benefits	Characteristics	Appearance	Viscosity (cS at 25°C)	Gum Content (%)	Flash Point (°C)	
SeraSense GB 10	Cyclopentasiloxane (and) Dimethiconol	<ul style="list-style-type: none"> <li>• Soft, silky skin feel</li> <li>• Excellent spread of emollient</li> <li>• Long-lasting conditioning</li> </ul>	Blends of approximately 12-20 of an ultra-high viscosity Dimethiconol in low viscosity diluents.	Clear, Colourless Viscous Fluid	6,000	15	>80	
SeraSense GB 12	Dimethicone (and) Dimethiconol				6,500	20	>135	
SeraSense GB 16					3,200	14		
SeraSense GB 26	Cyclopentasiloxane (and) Dimethiconol				Blends of approximately 15 of an ultra-high viscosity Dimethiconol in low viscosity diluents.	4,500	15	>80
SeraSense GB 87	Isododecane (and) Dimethiconol				Blends of approximately 15 of an ultra-high viscosity Dimethiconol in isododecane.	1,500	15	49.5
SeraSense GB 88	C11-13 Isoparaffin (and) Isohexadecane (and) Dimethiconol				Blends of approximately 27 of an ultra-high viscosity Dimethiconol in a volatile blend of hydrocarbons.	26,000	27	95
SeraSense GBA 85	C13-15 Alkane (and) Dimethiconol				Blends of approximately 20.5 of an ultra-high viscosity Dimethiconol in a natural derived C13-15 Alkane.	6,800	20.5	87
SeraSense GBA 86	Undecane (and) Tridecane (and) Dimethiconol				Blends of approximately 27 of an ultra-high viscosity Dimethiconol in a natural based, fresh, dry and volatile hydrocarbons.	26,000	27	81
SeraSense GB 11					Blends of approximately 15 and 23 of an ultra-high viscosity Dimethicone in low viscosity diluents.	6,000	15	
SeraSense GB 14	Cyclopentasiloxane (and) Dimethicone					105,000	23	>80
SeraSense GB 24					Blends of approximately 40 of an ultra-high viscosity Dimethicone in low viscosity diluents.	9,500	40	
SeraSense GB 36	Dimethicone				Blends of approximately 8 of an ultra-high viscosity Dimethicone in diluents.	2,500	8	>300
SeraSense GB 38	Dimethicone				Blends of approximately 14 of an ultra-high viscosity Dimethicone in low viscosity dimethicone.	3,300	14	>135



## Phenyl Modified Silicones

Product Name	INCI Name	Benefits	Characteristics	Appearance	Viscosity (cS at 25°C)	Refractive Index (at 25°C)	Flash Point (°C)
SeraSense SF DDM	Diphenyl Dimethicone	<ul style="list-style-type: none"> <li>High gloss</li> <li>Improves spread</li> <li>Unique soft feel (even compared with other silicones)</li> </ul>	This phenyl modified compound has a higher refractive index than standard phenyl silicones, leading to benchmark beating gloss in formulations. Improves spread and slip. Good organic compatibility. Addition levels vary depending on desired gloss.	Clear to Slightly Hazy, Colourless Fluid	400	1.505	>300
SeraSense SF PTM	Phenyl Trimethicone		Effective shine enhancing agent. Improves spread and slip in hair and skin care formulations. Good organic compatibility. Non-tacky feel, ideal for use in sun care products. Recommended usage level 0.5-5		25	1.460	>101

## Vinyl Dimethicone Fluids

Product Name	INCI Name	Benefits	Characteristics	Appearance	Viscosity (cS at 25°C)	Vinyl Content (mmol/g)
SeraSense SF VD 100	Vinyl Dimethicone	<ul style="list-style-type: none"> <li>None-tacky emollient</li> <li>Superb skin lubricity</li> <li>Excellent spread quality</li> <li>Extremely low surface tension</li> </ul>	Vinyl dimethicone fluid with a vinyl group attached makes these ingredients good spreading agent.	Colorless & Transparent	100	0.3 - 0.45
SeraSense SF VD 200			It provides higher persistence than lower viscosity. It create a non-sticky and elegant skin feel		200	0.2 - 0.3

## Amino-Functional Fluids

Product Name	INCI Name	Benefits	Characteristics	Appearance	Viscosity (cS at 25°C)	Flash Point (°C)	Amine contents (wt%)
SeraSense SA 30	Amodimethicone	<ul style="list-style-type: none"> <li>Improved combability</li> <li>Colour protection</li> <li>Cuticle protection</li> </ul>	Amino modified silicones for use in various leave on and rinse conditioners and serums for coloured or dry damaged hair. Excellent conditioning properties with improved wet and dry combability and a soft dry hair feel.	Clear - Slightly Hazy Fluid	2,000	> 100	1.00
SeraSense SA 34	Amodimethicone		Recommended usage level 0.5-3		5,500		0.04



## Film formers & Fixatives & Dispersants

Product Name	INCI Name	Benefits	Characteristics	Appearance	Viscosity (cS at 25°C)	Active Content(%)	Base Oil
SeraSense AC 15	Acrylates / Dimethicone Copolymer (and) Cyclopentasiloxane	<ul style="list-style-type: none"> <li>Soft flexible film former</li> <li>Water resistant effect</li> <li>Good compatibility &amp; dispersion stability</li> </ul>	Graft copolymer with an acrylic polymer backbone and dimethylpolysiloxane side chain. They combines the benefits of acrylic resins with silicones. They are useful ingredients giving long lasting properties. Shows excellent water and oil repellency, wash off resistance and act as soft flexible film former.		200	30	Cyclopentasiloxane
SeraSense AC 16	Acrylates / Dimethicone Copolymer (and) Dimethicone				30		2cS Dimethicone Fluid
SeraSense AC 17	Acrylates / Dimethicone copolymer (and) Phenyltrimethicone				30,000	40	Phenyltrimethicone
SeraSense AC 18	Acrylates / Dimethicone copolymer (and) Dimethicone				200	25	5cS Dimethicone fluid
SeraSense AC 19	Acrylates / Dimethicone copolymer (and) Isododecane				500		Isododecane
SeraSense ACA 10	Acrylates / Dimethicone copolymer (and) Undecane (and) Tridecane				700		Undecane & Tridecane
SeraSense AC 29	Acrylates / Dimethicone copolymer (and) Isododecane	<ul style="list-style-type: none"> <li>Hard film former</li> <li>Water resistant effect</li> <li>Good compatibility &amp; dispersion stability</li> </ul>	Graft copolymer with an acrylic polymer backbone and dimethylpolysiloxane side chain. They combines the benefits of acrylic resins with silicones. They are useful ingredients giving long lasting properties. Shows excellent water and oil repellency, wash off resistance and act as hard type film former.	Colourless to lightly yellow, Transpatent to slightly haze	200	40	Isododecane
SeraSense RB 21	Dimethicone (and) Trimethylsiloxysilicate	<ul style="list-style-type: none"> <li>Pigment adhesion promotor</li> <li>Wash-off resistance</li> <li>Soft skin feel</li> <li>Anti-frizz agent</li> </ul>	This silicone resin in fluid blend offers good pigment adhesion with a matt finish for use in colour cosmetics. For hair care applications, this ingredient is easilly incorporated into protective serums where its anti-frizz properties are truly impressive. Recommended usage level 0.5-3		800	33	100cS Dimethicone Fluid
SeraSense RB 22	Cyclopentasiloxane (and) Trimethylsiloxysilicate				500	50	Cyclopentasiloxane
SeraSense RB 23	Dimethicone (and) Trimethylsiloxysilicate				700	65	2cS Dimethicone Fluid
SeraSense RB 24	Dimethicone (and) Trimethylsiloxysilicate				500	70	1.5cS Dimethicone Fluid
SeraSense RBA 25	Undecane (and) Tridecane (and) Trimethylsiloxysilicate				450	70	Undecane & Tridecane
SeraSense RBA 26	C13-15 Alkane (and) Trimethylsiloxysilicate				500	70	C13-15 Alkane
SeraSense AW 61	Acrylates / Stearyl acrylate / Dimethicone Methacrylate Copolymer	<ul style="list-style-type: none"> <li>Wax type mild film former</li> <li>Excellent gloss persistence</li> <li>Excellent adhesion</li> </ul>	Graft copolymer with an acrylic polymer backbone and dimethylpolysiloxane side chain. They combines the benefits of acrylic resins with silicones. They are useful ingredients giving long lasting properties. Shows excellent water and oil repellency, wash off resistance and act as mild film former and shows good adhesion and gloss.	White to light yellow wax	Mp. 30	100	-
SeraSense AD 52	Dimethicone (and) Acrylates/Dimethicone Copolymer	<ul style="list-style-type: none"> <li>Good dispersion stability with pigments and powders</li> <li>Good compatibility with organic sunscreens and cosmetic ingredients</li> </ul>	Graft copolymer with an acrylic polymer backbone and dimethylpolysiloxane side chain. They combines the benefits of acrylic resins with silicones.	Clear, Colorless-Light yellow	20	30	2cS Dimethicone Fluid
SeraSense AD 54	Methyl Trimethicone (and) Acrylates/Dimethicone Copolymer	<ul style="list-style-type: none"> <li>Good dispersion stability with pigments and powders</li> <li>Good compatibility with organic sunscreens and cosmetic ingredients</li> </ul>	- Anchorage of ester group of polyacrylate on pigment surface - Hydrogen bond of hydrophilic functional group with OH group of pigment surface 0.5 - 20% to sunscreens and color cosmetic formulations		20	30	Methyltrimethicone

## Functional Fluids

Product Name	INCI Name	Benefits	Characteristics	Appearance	Viscosity (cS at 25°C)
SeraSense CF 50		<ul style="list-style-type: none"> <li>Wide range of compatibilities with both polar and non-polar solvents</li> <li>Smoother, less tacky and more substantive than linear silicones</li> <li>Enhanced binder properties in powder</li> <li>Stable in acid/base conditions</li> </ul>	Carbinol structure is slightly different than commercial products. General appearance is same. This product offer Improving pigment and active processing and suspension, Enhancing SPF in sun care applications	Colourless - light amber Fluid	60
SeraSense CF 52	Bis hydroxyethoxypropyl Dimethicone				45
SeraSense CF 53					35
SeraSense SF PCA	PCA Dimethicone	<ul style="list-style-type: none"> <li>Long lasting smooth, silky feel</li> <li>Wetting and dispersing agent</li> </ul>	This product has outstanding emolliency. It helps to disperse the pigment in the silicone by lowering the interaction tension.	Clear - Slightly Hazy yellow Fluid	600



### Silicone Copolyols

Product Name	INCI Name	Benefits	Characteristics	Appearance	Viscosity (cS at 25°C)	HLB	Gel content(%)	Base Oil
SeraSol SC 81	PEG-12 Dimethicone	<ul style="list-style-type: none"> <li>Pro-foamer</li> <li>Si/W emulsifier</li> <li>Cold processable</li> <li>Wetting agent</li> </ul>	<p>A light and silky water soluble PEG modified silicone for use in a wide range of skin care and hair care applications. Good foam booster and wet conditioner for shaving, bathing and shower products.</p> <p>Recommended usage level 1.5-5.0</p>	Clear to slightly hazy, light amber fluid	250-450	13		
SeraSol SC 83T	Cetyl PEG/PPG-10/1 Dimethicone	<ul style="list-style-type: none"> <li>Cold processable</li> <li>Non-ionic W/O or W/Si emulsifier</li> <li>W/O/W emulsions possible</li> <li>Excellent key emulsion stabiliser</li> <li>Light unique silky emulsions created</li> </ul>	<p>Unique silicone emulsifiers for skin creams, lotions and foundations. The copolyol acts as the hydrophile whilst the alkyl modification offers the hydrophobic tail, with the silicone acting as the sandwiching layer that offers a pleasant light and silky feel to the W/O or W/Si emulsion. Compatible with high levels of organic ingredients. Generates excellent freeze / thaw stability.</p> <p>Recommended usage level 0.5-3.0</p>	Clear, colourless to yellow fluid	1,500	< 5		
SeraSol SC 95	Lauryl PEG-8 Dimethicone	<ul style="list-style-type: none"> <li>W/O or W/Si emulsifier</li> <li>Good compatibility with silicones and organic oils</li> <li>Low viscosity emulsions can be achieved with cold process</li> <li>High pigment and powder dispersion performance</li> </ul>	<p>W/O or W/Si silicone emulsifier can make stable emulsions with low viscosity and pleasant sensory feel. The alkyl functionality contributes to high compatibility with silicone and organic oils, and the PEG hydrophilic group helps enhance pigment dispersion performance to give improved color intensity of foundations.</p> <p>Recommended usage level 1.0-5.0</p>	Clear to slightly hazy, colourless to light yellow fluid	850	3		
SeraSol SC 85	PEG-11 Methyl Ether Dimethicone	<ul style="list-style-type: none"> <li>Pro-foamer</li> <li>Si/W emulsifier, O/W co-emulsifier</li> <li>Cold processable</li> <li>Wet-conditioning agent</li> <li>Humectant</li> </ul>	<p>Silicone glycol copolymer soluble in water. This silky soft PEG modified silicone offers excellent wet conditioning whilst creating gloss and reducing static in skin and hair</p> <p>Recommended usage level 0.5-5</p>		120	12		
SeraSol SC 86T	PEG-10 Dimethicone	<ul style="list-style-type: none"> <li>Silicone emulsifier</li> <li>Formulation flexibility with a broad range of silicone and organic oil phases</li> <li>Low viscosity emulsions can be achieved</li> <li>Ease of use</li> <li>Cold or hot processing</li> </ul>	<p>A light and silky PEG modified silicone for use as a surface tension depressant, or emulsifier in a wide range of colour cosmetic, skin care and clear hair care applications. Good wet conditioner for shaving and hair care products.</p> <p>Recommended usage level 0.5-3</p>	Clear, colourless fluid	700	< 4		
SeraSol SC 93	Bis-PEG-12 Dimethicone	<ul style="list-style-type: none"> <li>Foaming property</li> <li>Moisturizing and sensory feel</li> <li>D4, D5, D6 contents : &lt; 0.1%; Low odor</li> </ul>	<p>SeraSol SC 93 is a copolymer of dual-ended polydimethylsiloxane and PEG-12. It is used in various applications such as personal care and household products.</p> <p>Recommended usage level 0.5-10</p>	Clear to hazy liquid	270	14		
SeraSol SC 105	Dimethicone (and) PEG/PPG-18/18 Dimethicone	<ul style="list-style-type: none"> <li>Good emulsion stability in water-in-silicone formulations</li> <li>Implement film forming feel</li> <li>D4, D5, D6 contents : &lt; 0.1%; Low odor</li> </ul>	<p>SeraSol SC 105 is a copolymer of polydimethylsiloxane, polyoxyethylene ether and polyoxypropylene ether. A light and silky PEG/PPG modified silicone for use as a surface tension depressant, or emulsifier in a wide range of colour cosmetic, skin care product.</p> <p>Recommended usage level 3-12</p>	Milky white liquid	2,000	2		
SeraSol PF 105	Lauryl Polyglyceryl-3 Polydimethylsiloxyethyl Dimethicone	<ul style="list-style-type: none"> <li>PEG Free silicone emulsifier</li> <li>Non-ionic W/O of W/Si emulsifier</li> <li>High compatibility with silicones and organic oils</li> <li>Good dispersion stability with pigments and powders</li> </ul>	<p>Polyglycerin modified W/O or W/Si Silicone emulsifier.</p> <p>These silicone emulsifier allow various PEG Free cosmetic formulations and provide enhanced sensory benefits.</p> <p>Also, its excellent powder dispersion capabilities can enable higher performance in formulations with pigments and powders.</p>		4,000	< 3		
SeraSol PF 106	Polyglyceryl-3 Polydimethylsiloxyethyl Dimethicone	<ul style="list-style-type: none"> <li>PEG Free silicone emulsifier</li> <li>Non-ionic W/O of W/Si emulsifier</li> <li>High compatibility with silicones and organic oils</li> <li>Good dispersion stability with pigments and powders</li> </ul>	<p>Polyglycerin modified W/O or W/Si Silicone emulsifier.</p> <p>These silicone emulsifier allow various PEG Free cosmetic formulations and provide enhanced sensory benefits.</p> <p>Also, its excellent powder dispersion capabilities can enable higher performance in formulations with pigments and powders.</p>	Transparent Colorless	5,000	< 5		
SeraSol PF 107	Polyglyceryl-3 Polydimethylsiloxyethyl Dimethicone	<ul style="list-style-type: none"> <li>PEG Free silicone emulsifier</li> <li>Non-ionic W/O of W/Si emulsifier</li> <li>High compatibility with silicones and organic oils</li> <li>Good dispersion stability with pigments and powders</li> </ul>	<p>Polyglycerin modified W/O or W/Si Silicone emulsifier.</p> <p>These silicone emulsifier allow various PEG Free cosmetic formulations and provide enhanced sensory benefits.</p> <p>Also, its excellent powder dispersion capabilities can enable higher performance in formulations with pigments and powders.</p>		4,000	< 3		
SeraSol EL 92A	Dimethicone (and) Dimethicone / PEG-10 / 15 Crosspolymer	<ul style="list-style-type: none"> <li>Silicone swellable elastomeric emulsifier</li> <li>Light non-greasy silicone elastomer feel</li> <li>Highly stable W/Si emulsifier</li> <li>Cold processable</li> <li>Unique skin feel</li> <li>Can form transparent serums</li> </ul>	<p>A PEG modified self-emulsifying crosslinked silicone elastomer for the creation of truly unique W/Si emulsions. It can be used in a variety of skin care, colour cosmetics and sun care applications.</p> <p>Recommended usage level 1.0-5.0</p>		150,000	-	29	6cS Dimethicone Fluid
SeraSol EL 98	Isohexadecane (and) PEG 15 / Lauryl Dimethicone Crosspolymer	<ul style="list-style-type: none"> <li>Excellent compatibility with organic oil</li> <li>Emulsifying silicone gel</li> <li>Cold processable</li> <li>Light non-greasy and silky skin feel-elastomeric feel</li> </ul>	<p>PEG, Alkyl modified self-emulsifying crosslinked silicone elastomer. It can be used in a variety of skin care products, colour cosmetics and sun care applications.</p> <p>Recommended usage level 1.0-5.0</p>	Translucent Paste	65,000	-	24	Isohexadecane
SeraSol EL 99	Dimethicone (and) PEG-15 / Lauryl Dimethicone Crosspolymer	<ul style="list-style-type: none"> <li>Excellent compatibility with organic oil</li> <li>Emulsifying silicone gel</li> <li>Cold processable</li> <li>Light non-greasy and silky skin feel-elastomeric feel</li> </ul>	<p>PEG, Alkyl modified self-emulsifying crosslinked silicone elastomer. It can be used in a variety of skin care products, colour cosmetics and sun care applications.</p> <p>Recommended usage level 1.0-5.0</p>		90,000	-	30	2cS Dimethicone fluid

# SeraSoft®

A versatile range of soft silicone waxes to offer the gentle care a sun, skin or lip care product needs, without greasy after effects.



## Silicone Waxes

Product Name	INCI Name	Benefits	Characteristics	Appearance	Melting point (°C)
SeraSoft SW 70-A	Stearyl Dimethicone (and) Octadecene	<ul style="list-style-type: none"> <li>Enhances gloss</li> <li>Promotes lubricity</li> <li>Water-barrier for the skin</li> <li>SPF booster</li> <li>Detackifier in creams and lotions</li> <li>Rheology Modifier</li> <li>High melting point(similar body temperature)</li> <li>Forming solid product</li> </ul>	<p>A soft wax alkylated silicone. The stearyl (C18)modification makes this type of silicone more compatible with organic ingredients. Melts luxuriously onto the skin at 32°C. Ideal for use in sun and lip care products due to its high refractive index, low tack, and potential pigment spreading abilities.</p> <p>Recommended usage level 0.5-10</p>	White to slightly yellow wax	32
SeraSoft SW 71-A	Cetyl Dimethicone	<ul style="list-style-type: none"> <li>Enhances gloss</li> <li>Promotes lubricity</li> <li>Water-barrier for the skin</li> <li>SPF booster</li> <li>Detackifier in creams and lotions</li> <li>Increase Viscosity</li> </ul>	<p>A liquid alkylated silicone. The cetyl(C16) modification makes this type of silicone more compatible with organic ingredients. Ideal for use in sun care products due to it's potential active spreading abilities.</p> <p>Recommended usage level 0.5-10</p>	Colourless to yellow clear liquid	18
SeraSoft SW 75	Bis-PEG-18 Methyl Ether Dimethyl Silane	<ul style="list-style-type: none"> <li>Water soluble</li> <li>Moisturizing film forming</li> <li>Melts on contact with skin</li> <li>Leaves skin feeling smooth and soft</li> <li>Detackifier in creams and lotions</li> <li>Improves foam quality</li> </ul>	<p>A water dispersible silicone glycol copolymer wax for use in various skin care and foaming applications due to its qualities as a rich pro-foamer and humectant. Melts onto skin.</p> <p>Recommended usage level 0.5-10</p>	White to slightly yellow wax	37



Dimethicone Emulsions

Product Name	INCI Name	Benefits	Characteristics	Appearance	Internal Viscosity (cS at 25°C)	Emulsion Viscosity (cS at 25°C)	Silicone contents (wrt%)	Particle Size (µm)	Emulsifier Type			
SeraShine EM 102	Dimethicone (and) Laureth-23 (and) Laureth-3	<ul style="list-style-type: none"> <li>• Reduced combing time on wet and dry hair</li> <li>• Conditioning agent</li> <li>• Leaves hair feeling soft</li> <li>• Imparts high gloss</li> </ul>	A non-ionic emulsion of a blend of ultra-high molecular weight polydimethylsiloxane gum and intermediate molecular weight polydimethylsiloxane fluid specifically designed for use in personal care products. This Silicone gum emulsion provides strong conditioning performance. Recommended usage level 2-5	Milky white liquid	1 million	4,000-8,000	60	10-30	Non-ionic			
SeraShine EM 103R					300,000			1-10				
SeraShine EM 104R					60,000			2,000-4,000				
SeraShine EM 106			A non-ionic emulsion of a blend of ultra-high molecular weight polydimethylsiloxane gum and intermediate molecular weight polydimethylsiloxane fluid with high particle size specifically designed for use in personal care products. This Silicone gum emulsion provides strong conditioning performance. Recommended usage level 2-5		500,000	2,000-10,000	40	20-40				
SeraShine EM 108R			A non-ionic emulsion of a blend of ultra-high molecular weight polydimethylsiloxane gum and intermediate molecular weight polydimethylsiloxane fluid specifically designed for use in personal care products. This Silicone gum emulsion provides strong conditioning performance. Recommended usage level 2-5		600,000	4,000-8,000	60	10-30				
SeraShine EM 125			A non-ionic emulsion of a high molecular weight polydimethylsiloxane fluid with a medium particle size specifically designed for use in personal care products. This product provides strong conditioning performance. Recommended usage level 2-5		500,000	7,000-15,000						
SeraShine EM 127			A non-ionic emulsion of a high molecular weight polydimethylsiloxane fluid with a medium particle size specifically designed for use in personal care products. This product provides strong conditioning performance. Recommended usage level 2-5		60,000	3,000-8,000	70	1-10				
SeraShine EM 129			Dimethicone (and) Laureth-23 (and) Laureth-4		A non-ionic emulsion of a blend of ultra-high molecular weight polydimethylsiloxane gum and intermediate molecular weight polydimethylsiloxane fluid specifically designed for use in personal care products. This Silicone gum emulsion provides strong conditioning performance. Recommended usage level 2-5	200,000	2,000-10,000	60		0.1-5		
SeraShine EM 201-A			Dimethiconol (and) TEA-Dodecylbenzenesulfonate		<ul style="list-style-type: none"> <li>• Ideal conditioning for all hair types</li> <li>• Improves wet combing</li> <li>• Gives a soft feel to hair and skin</li> <li>• Enhances shine</li> <li>• Foam is not adversely affected</li> </ul>	An anionic emulsion of very high viscosity polydimethylsiloxane. Designed for frequent use. Recommended usage level 0.5-5 depending on conditioning required and hair type	60,000	1-1,000		50	0.3-0.7	Anionic
SeraShine EM 203-A							1 million	1-1,000		60	0.2-1	
SeraShine EM 205-A	<ul style="list-style-type: none"> <li>• Designed for coarse hair types</li> <li>• Intense conditioning</li> <li>• Improves wet combing</li> <li>• Gives a soft feel to hair and skin</li> <li>• Enhances shine</li> <li>• Foam is not adversely affected</li> </ul>	An anionic emulsion of a high viscosity polydimethylsiloxane with a large particle size for enhanced deposition and intense conditioning. Specially designed for coarse African and Asian hair types. Recommended usage level 2-6		500,000		3,000-10,000	60	5-12				
SeraShine EM 208-A	<ul style="list-style-type: none"> <li>• Designed for fine hair types</li> <li>• Improves wet combing</li> <li>• Gives a soft feel to hair and skin</li> <li>• Enhances shine</li> <li>• Foam is not adversely affected</li> </ul>	An anionic emulsion of very high viscosity polydimethylsiloxane. Combination of high internal viscosity and fine particle size means this emulsion is ideal for fine hair types. Designed for frequent use. Recommended usage level 0.5-5 depending on conditioning required		>1 million		1-1,000	50	0-0.3				
SeraShine EM 234C	<ul style="list-style-type: none"> <li>• Improve soft and smooth, and leave light feeling for hair.</li> <li>• Easy to be rinsed off, no build up.</li> <li>• Mild preservative system, MIT/CMIT free.</li> </ul>	A clear micro dimethiconol anionic emulsion, can be used for clear shampoo and other clear water based products. Recommended usage level 0.5 - 5.0%		Slight yellow clear to translucent liquid		70,000	150	22	<0.1			
SeraShine EM 237	<ul style="list-style-type: none"> <li>• Super strong conditioning effect, improve dry and wet combing for hair.</li> <li>• Leave hair feeling soft and smooth.</li> </ul>	An anionic emulsion of high viscosity dimethiconol, ultra big particle size polymerization emulsion. Recommended usage level 0.5 - 5.0%		Milky white emulsion		0.5 million-1.8 million	8,000-20,000	40	20-40			



## Amino Functional Emulsions

Product Name	INCI Name	Benefits	Characteristics	Appearance	Internal Viscosity (cS at 25°C)	Emulsion viscosity (cS at 25°C)	Silicone contents (wt%)	Particle Size (µm)	Emulsifier Type	Amine contents (wt%)
SeraShine EM 301-A	Amodimethicone (and) Trideceth-12 (and) Cetrimonium Chloride	<ul style="list-style-type: none"> <li>Highly substantive to hair</li> <li>Improves wet and dry combing</li> <li>Offers colour protection</li> <li>Excellent detangling</li> </ul>	<p>A cationic macro emulsion of an amino functional silicone polymer for use in a range of hair care formulations including shampoos, conditioners, styling aids and hair colourants</p> <p>Recommended usage level 1-5</p>	Milky white	5,000	1-100	35	<0.3	Cationic	0.07
SeraShine EM 305CR	Amodimethicone (and) C12-14 sec-Pareth-7	<ul style="list-style-type: none"> <li>Micro emulsion</li> <li>Reduced combing time on wet and dry hair</li> <li>Conditioning agent</li> <li>Imparts high gloss - Leaves hair feeling soft</li> </ul>	<p>A non-ionic micro emulsion has an average particle size of 30 nanometers.</p> <p>This product is micro emulsion of amino-modified silicone polysiloxane fluid specifically designed to be used in aqueous based conditioning products for damaged hair.</p> <p>Recommended usage level 1-4</p>	Clear to slightly hazy liquid	1,000	<500	23	<0.1	Non-ionic	0.2
SeraShine EM 505	Amodimethicone (and) Dimethicone (and) Laureth-23 (and) Laureth-6	<ul style="list-style-type: none"> <li>Superior conditioning performance</li> <li>Excellent hair smoothness</li> <li>Enhances dry combing and softness</li> </ul>	<p>A non-ionic macro emulsion of a blend of amino-modified silicone polysiloxane fluid and high molecular weight polydimethylsiloxane fluid specifically designed for use in hair care products requirable low yellowish and conditioning effect.</p> <p>Recommended usage level 2-5</p>	Milky white liquid	220,000	2,000 ~5,000	60	<1	Non-ionic	0.03
SeraShine EM 512	Dimethicone (and) Amodimethicone (and) Laureth-23 (and) Polyquaternium-10 (and) Laureth-4	<ul style="list-style-type: none"> <li>Superior conditioning performance</li> <li>Excellent hair smoothness</li> <li>Enhances dry combing and softness</li> </ul>	<p>A non-ionic macro emulsion of a blend of amino-modified silicone polysiloxane fluid and high molecular weight Polydimethylsiloxane fluid specifically designed for use in hair care products requirable low yellowish and conditioning effect.</p> <p>Recommended usage level 1-5</p>	Milky white liquid	150,000	30,000	60	1-10	Non-ionic	0.01



## Multi-Functional Emulsions

Product Name	INCI Name	Benefits	Characteristics	Appearance	Internal Viscosity (cS at 25°C)	Emulsion viscosity (cS at 25°C)	Silicone contents (wt%)	Particle Size (µm)	Emulsifier Type
SeraShine EM 503	Dimethicone (and) Cocamidopropyl Betaine (and) Trideceth-7	<ul style="list-style-type: none"> <li>Superior conditioning performance</li> <li>Excellent hair smoothness</li> <li>Enhances dry combing and softness</li> </ul>	An amphoteric emulsion of a high viscosity polydimethylsiloxane fluid with the addition of a guar gum for use in shampoo and conditioner formulations without the need for a deposition aid. Recommended level 2-5	Milky white liquid	500,000	8,000~20,000	65	28-42	Amphoteric
SeraShine EM 504R	Dimethicone (and) Cocamidopropyl Betaine (and) Laureth-3 (and) Guar Hydroxypropyltrimonium Chloride	<ul style="list-style-type: none"> <li>Anti-frizz agent</li> <li>Wash - off resistance</li> <li>Gloss</li> <li>Soft skin feel for aqueous base formulations</li> <li>Easy to use in water based product</li> </ul>	A non-ionic emulsion of resin blends imparts a soft feel to skin and hair. It is specifically designed to facilitate incorporation of resin blends into water based formulations. Recommended usage level 1-10	Opaque	800	-	55	Max. 5	
SeraShine EM 510	Dimethiconol (and) Decyl glucoside (and) 1,2-Hexanediol (and) Carbomer	<ul style="list-style-type: none"> <li>Biodegradable surfactant emulsion</li> <li>Leaves hair feeling soft</li> <li>Anti-frizz agent</li> <li>Gloss</li> <li>Easy to use in water based product.</li> </ul>	A non-ionic emulsion of high viscosity polydimethylsiloxane fluid. It imparts a soft feel to skin and hair. Recommended usage level 1-10	Milky white to Slightly yellow liquid	80,000	20,000	65	1~15	
SeraSilk EM 602	Dimethicone / Vinyl Dimethicone Crosspolymer (and) C12-14 sec-Pareth-7	<ul style="list-style-type: none"> <li>Imparts a silky feel to skin and hair</li> <li>Leaves hair feeling soft</li> <li>Reduces shine on skin</li> </ul>	A non-ionic water-based suspension of elastomeric silicone powder imparts silky feel to skin and hair. It is specifically designed to facilitate incorporation of elastomer powder into water based formulations. Recommended usage level 1-5	Milky white liquid	-	500~5,000	58	1~10	
SeraSilk EM 605	Dimethicone (and) Water (and) Glycerin (and) Butylene glycol (and) Glycereth-20 (and) Pentylene glycol (and) Dimethicone/Vinyl Dimethicone Crosspolymer (and) Phenoxyethanol (and) Carbomer (and) Amodimethicone (and) Sodium Hydroxide (and) Disodium EDTA	<ul style="list-style-type: none"> <li>Emulsion of crosslinked silicone elastomer blends</li> <li>Light and smooth feel for aqueous base formulations</li> <li>Provides soft, silky feel without greasy feel</li> <li>Easy to use cosmetic formulation</li> </ul>	A transparent to translucent emulsion of elastomer blends imparts a silky feel to skin and hair. This product as a emulsifier free emulsion is specifically designed to facilitate incorporation of elastomer blends into water based formulations. Recommended usage level 1-10	Clear to Slightly hazy, Colorless to Slightly yellow gel	Max. 500	20,000 ~ 100,000	30	1 ~ 30	Non-ionic
SeraSilk EM 610	Dimethicone (and) Water (and) Glycerin (and) Butylene glycol (and) Glycereth-20 (and) Pentylene glycol (and) Dimethicone/Vinyl Dimethicone Crosspolymer (and) 1,2-Hexanediol (and) Carbomer (and) Amodimethicone (and) Sodium Hydroxide (and) Disodium EDTA	<ul style="list-style-type: none"> <li>Emulsion of crosslinked silicone elastomer blends</li> <li>Light and smooth feel for aqueous base formulations</li> <li>Provides soft, silky feel without greasy feel</li> <li>Easy to use cosmetic formulation</li> <li>Phenoxyethanol free emulsion</li> </ul>							
SeraSilk EM 608	Dimethicone (and) Dimethicone / Vinyl Dimethicone Crosspolymer (and) Laureth-4 (and) Laureth-23 (and) 1,2-Hexanediol	<ul style="list-style-type: none"> <li>Using easy silicone elastomer blends to aqueous cosmetic products</li> <li>Imparts a silky feel to skin and hair</li> <li>Reduces tackiness in formulations</li> </ul>	A non-ionic emulsion of elastomer blends imparts a silky feel to skin and hair. It is specifically designed to facilitate incorporation of elastomer blends into water based formulations. Recommended usage level 1-70	Milky white liquid	130,000	1,000~15,000	75	1~15	



Elastomer Blends

Product Name	INCI Name	Benefits	Characteristics	Appearance	Viscosity (cS at 25°C)	Gel content(%)	Base Oil
SeraSilk EL 58	Dimethicone (and) Dimethicone/Vinyl Dimethicone Crosspolymer	<ul style="list-style-type: none"> <li>Excellent thickening agent for volatile silicones and low viscosity silicones</li> <li>Light, silky, non-greasy skin feel</li> </ul>	A mixture of a high molecular weight crosslinked silicone elastomer in cyclopentasiloxane. Recommended usage level 1-90	Transparent Paste	400,000	18	2cS Dimethicone Fluid
SeraSilk EL 59	Cyclopentasiloxane (and) Dimethicone/Vinyl Dimethicone Crosspolymer				320,000	13.5	Cyclopentasiloxane
SeraSilk EL 60	Cyclopentasiloxane (and) Dimethicone /Vinyl Dimethicone Crosspolymer			Slightly translucent paste	350,000	13	Cyclopentasiloxane
SeraSilk EL 61	Dimethicone (and) Dimethicone /Vinyl Dimethicone Crosspolymer				160,000	20	6cS Dimethicone Fluid
SeraSilk EL 63	Cyclopentasiloxane (and) Dimethicone /Vinyl Dimethicone Crosspolymer				380,000	14	Cyclopentasiloxane
SeraSilk EL 64	Dimethicone (and) Dimethicone /Vinyl Dimethicone Crosspolymer	<ul style="list-style-type: none"> <li>Gives a light, silky, non-greasy skin feel</li> <li>Mattifying effect</li> <li>Imparts viscosity to W/O emulsions</li> <li>Improves water resistance</li> <li>Reduces tackiness in formulations</li> <li>Improves skin adhesion for actives and pigments</li> </ul>	A mixture of a high molecular weight crosslinked silicone elastomer in low viscosity silicone fluid. Recommended usage level 1-90		400,000	20	2cS Dimethicone Fluid
SeraSilk EL 65					430,000	18	
SeraSilk EL 66					250,000	15	1.5cS & 2cS Dimethicone Fluid
SeraSilk EL 74	Dimethicone (and) Cyclopentasiloxane (and) Dimethicone / Vinyl Dimethicone Crosspolymer				Transparent Paste	150,000	13
SeraSilk EL 75	Dimethicone (and) Dimethicone / Vinyl Dimethicone Crosspolymer			6cS Dimethicone Fluid			
SeraSilk EL 81	Dimethiconol (and) Isododecane (and) Dimethicone / Vinyl Dimethicone Crosspolymer			High transparent paste	130,000	16	Dimethiconol & Isododecane
SeraSilk EL 86	Methyl Trimethicone (and) Dimethicone / Vinyl Dimethicone Crosspolymer	<ul style="list-style-type: none"> <li>Gives Silky skin feeling</li> <li>Efficient thickening agent</li> <li>Matte effect</li> <li>Good compatibility with silicones</li> </ul>	SeraSilk EL 86 uses MTM base oil to produce a lightweight texture and a soft matte feel. SeraSilk EL 86 has a transparent appearance because of very lower degree of cross-link than general elastomer blends and maintains its clarity upon dilution in low molecular weight silicones.	Transparent Paste	70,000	10	Methyl Trimethicone
SeraSilk EL 10	Dimethicone (and) Dimethicone Crosspolymer	<ul style="list-style-type: none"> <li>Gives soft and long lasting skin feel</li> <li>Thickening agent</li> <li>D4, D5 content is less than 0.1%.</li> </ul>	SeraSilk EL 10 is a mixture of high molecular weight crosslinked silicone elastomer in Dimethicone-5cSt. It can be included in many products to enhance the skin feel, spreadability, and absorption of the finished product. Recommended usage level 1-90	Slightly Translucent Paste	250,000	17	5cS Dimethicone Fluid
SeraSilk EL 11	Dimethicone (and) Dimethicone Crosspolymer		SeraSilk EL 11 is a mixture of high molecular weight crosslinked silicone elastomer in Dimethicone-5cSt. It can be included in many products to enhance the skin feel, spreadability, and absorption of the finished product. Recommended usage level 1-90		350,000	16.5	5cS Dimethicone Fluid
SeraSilk EL 12	Cyclopentasiloxane (and) Dimethicone Crosspolymer	<ul style="list-style-type: none"> <li>Provides silky, smooth and long-lasting skin feel</li> <li>Light texture</li> <li>D4 content is less than 0.1%</li> </ul>	A mixture of a high molecular weight crosslinked silicone elastomer in low viscosity silicone fluid.		430,000	12.5	Cyclopentasiloxane
SeraSilk EL 13	Cyclopentasiloxane (and) Dimethicone Crosspolymer				330,000	12	Cyclopentasiloxane
SeraSilk ELA 20	Undecane (and) Tridecane (and) Dimethicone / Vinyl Dimethicone Crosspolymer	<ul style="list-style-type: none"> <li>Works well with all kinds of oils including natural and silicone oil</li> <li>Uses base oil manufactured via fermentation of coconut and palm kernel oil</li> <li>Light non-greasy and silky skin feel</li> </ul>	A mixture of a high molecular weight crosslinked silicone elastomer in natural origin oil.	Translucent Paste	150,000	23	Undecane (and) Tridecane
SeraSilk ELA 21	C13-15 Alkane (and) Dimethicone / Vinyl Dimethicone Crosspolymer	<ul style="list-style-type: none"> <li>Works well with all kinds of oils including natural and silicone oil</li> <li>Uses base oil manufactured via fermentation of Sugar cane oil</li> <li>Light non-greasy and silky skin feel</li> </ul>	A mixture of a high molecular weight crosslinked silicone elastomer in natural origin oil.		150,000	23	C13-15 Alkane
SeraSilk AM 76	Cyclopentasiloxane (and) Cetearyl Dimethicone / Vinyl Dimethicone Crosspolymer	<ul style="list-style-type: none"> <li>Excellent compatibility with organic oil</li> <li>Soft skin feel &amp; spreading ability</li> <li>Thickening agent</li> <li>Stabilizer for W/O and O/W emulsion.</li> </ul>	A crosslinked gel contains a substituted alkyl functionality to increase organic compatibility in personal care formulations. High swelling capability in hydrocarbon oils and increase the structural viscosity of the oil phase.	Slightly translucent paste	200,000	12	Cyclopentasiloxane
SeraSilk AM 80	Dimethicone (and) Cetearyl Dimethicone / Vinyl Dimethicone Crosspolymer		Smooth, silky feeling of elastomer and a good adhesion onto the skin due to the alkyl chain.			14	2cS Dimethicone Fluid
SeraSilk PD 72	Dimethicone (and) Dimethicone / Vinyl Dimethicone Crosspolymer	<ul style="list-style-type: none"> <li>Using easy silicone elastomer powder to cosmetic product</li> <li>Gives a light, silky, non-greasy skin feel</li> <li>Matte effect</li> <li>Imparts viscosity to W/O emulsions</li> <li>May absorb sebum</li> <li>Can be used in cold processes</li> <li>Good rolling effect to make-up product</li> </ul>	A mixture of a high molecular weight crosslinked silicone elastomer powder in a blend of cyclopentasiloxane and cyclohexasiloxane for a unique evaporation profile. Enhance the skin feel, spreadability, absorption and "soft-focus" effect of the finished product. Recommended usage level 1-95	Translucent paste		26	2cS Dimethicone Fluid



# SeraSnow®

A light range of silicone powders and treatments to improve the feel, compatibility or water resistance of products where these unique products are needed.

## Silicone Powders & Treatments

Product Name	INCI Name	Benefits	Characteristics	Appearance	Viscosity (cS at 25oC)	H-contents (mmol/g)	Flash Point (°C)	Particle Size (µm)
SeraSnow SF 10	Methicone	<ul style="list-style-type: none"> <li>• Surface coating for pigments</li> <li>• Soft, silky texture</li> </ul>	A non-toxic, hydrophobic surface treatment for pigments. Methicone surface treating ensures pigment adhesion to the skin and improves ease of integrating pigments into W/Si foundation products.		20	15.5		-
SeraSnow SF 11	Hydrogen Dimethicone	<ul style="list-style-type: none"> <li>• Highly reactive</li> <li>• Surface coating for pigments</li> <li>• Soft, silky texture</li> </ul>	Polysiloxanes, which contains silicon-bonded hydrogen atoms. This crosslinking agent is used to vulcanize vinyl-group containing silicones. For the reaction work, the presence of a precious metal catalyst is necessary. The optimum cure ratio is usually determined by measuring the hardness of cured elastomer at different ratios.	Colourless liquid	40	7.3	100	-
SeraSnow SP 13	Dimethicone / Vinyl dimethicone Crosspolymer	<ul style="list-style-type: none"> <li>• Silicone elastomer powder</li> <li>• Gives a light, silky, non-greasy skin feel</li> <li>• Matte effect</li> <li>• Imparts viscosity to W/O emulsions</li> <li>• May absorb sebum</li> <li>• Can be used in cold processes</li> <li>• Good rolling effect to make-up product</li> </ul>	A 100% active high molecular weight crosslinked silicone elastomer powder. SeraSnow SP 13 can be included in many products to enhance the skin feel, spreadability, absorption and "soft-focus" effect of the finished product. Can also be used in dry shampoo formulations to absorb natural oils whilst offering a soft feel		-	-	-	2-18
SeraSnow SP 14	Vinyl Dimethicone / Methicone Silsesquioxane Crosspolymer	<ul style="list-style-type: none"> <li>• Silicone resin coated elastomer powder</li> <li>• Excellent dispersibility, flowability, non-agglomeration</li> <li>• Provide soft-focus effect, wrinkle cover</li> <li>• High oil and sebum absorption : dry, silky smooth skin feel</li> </ul>	SeraSnow SP 14 consists of internal spherical silicone elastomer powder and an external shell of silicone resin powder. It is designed to improve the agglomeration of the silicone elastomer powder. So It has excellent dispersibility and flowability. It can be included in many products to enhance the skin feel, spreadability, absorption and soft-focus- effect of the finished product. It is excellent for wrinkle-smoothing formulations	White powder	-	-	-	5-20



# SeraSkin®

Specialist skin active protecting systems for creating clear gels that can deliver actives, offer strong wash off resistance and protect the skin in woundcare applications.

## Skin Adhesion Polymers

Product Name	INCI Name	Benefits	Characteristics	Appearance	Viscosity (cS at 25°C)	Gel Time (25°C)	Penetration (mm*10)
SeraSkin RS 10A	Bis-Vinyl Dimethicone	• Forms a clear protective gel layer	This 2-part blend crosslinks to create a transparent gel. Can be used in mask pack and woundcare applications.		450		
SeraSkin RS 10B	Bis-Vinyldimethicone (and) Bis-Hydrogen Dimethicone (and) Hydrogen Dimethicone			Transparent liquid	260	60 - 120 mins	180-230 mins

